
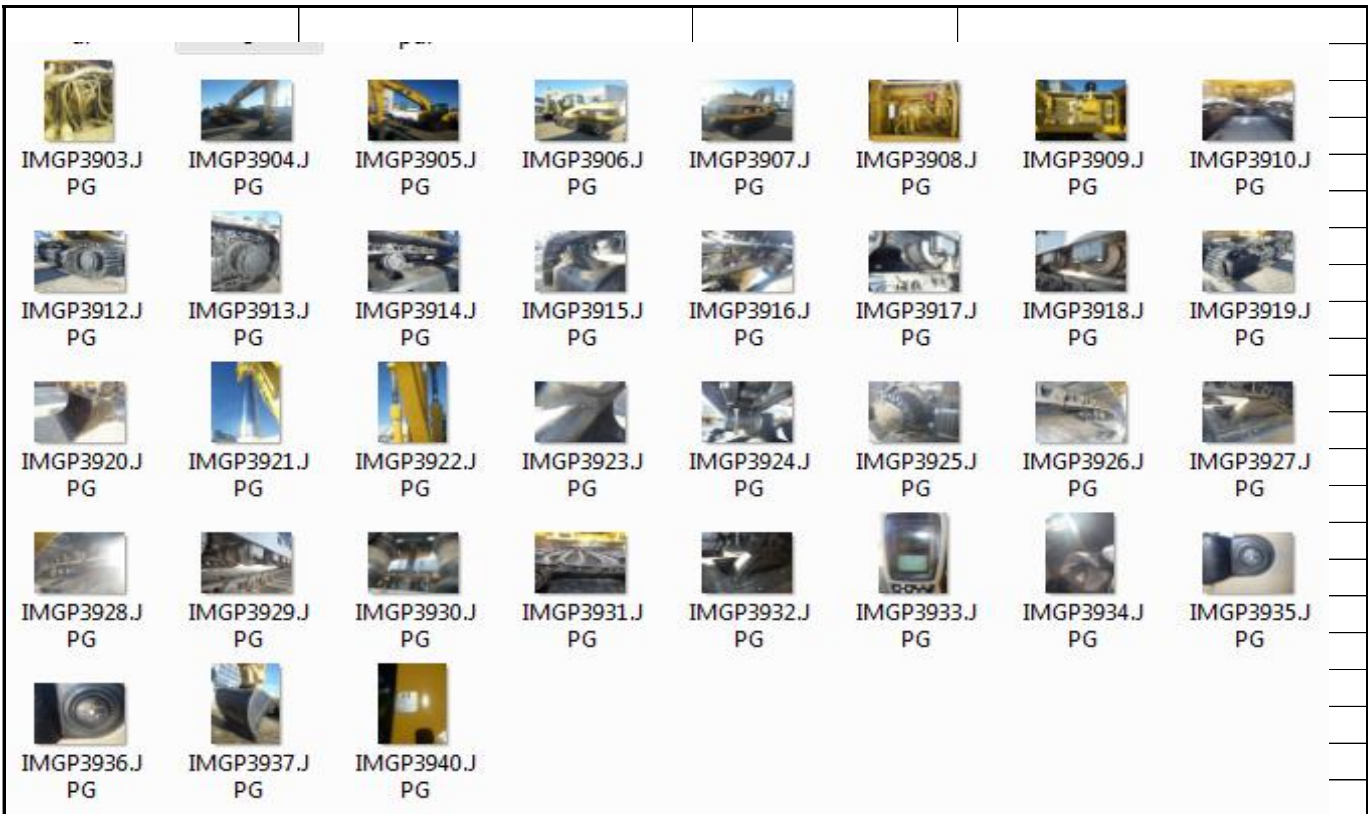


Evaluation Tracked Excavator		<a href="http://www.mevas.eu">www.mevas.eu</a>	
Customer/location:	<i>Mantruc</i>	vers 10/12	
Date:	<i>17/12/2013</i>		
Machine / type:	<i>CAT 325CLN</i>	Hour reading:	<i>stopped at 8686</i>
Serial No.:	<i>CSJ00405</i>	Year:	<i>2002</i>
Inspector:	<i>Mevas 12</i>	stick length:	<i>3.2m</i>
CE <input checked="" type="checkbox"/>	air con <input checked="" type="checkbox"/>	boom check valve	<input checked="" type="checkbox"/>
auto lube <input type="checkbox"/>	stick check valve <input type="checkbox"/>	boom variable <input type="checkbox"/>	Parts book <input type="checkbox"/> Op-Manual <input type="checkbox"/>
blade <input type="checkbox"/>	auxiliary lines <input checked="" type="checkbox"/>	quick coupler type:	
<b>cab</b>		cab door	<i>good</i>
seat	<i>cover is worn through</i>	windows	<i>good</i>
switches	<i>good</i>	wipers	<i>good</i>
gauges	<i>SMU is not working</i>	floor mats	<i>good</i>
aircon / heat	<i>too cold to test/good</i>	structure	<i>good</i>
<b>engine</b>		fluid levels	<i>coolant a bit low</i>
leaks	<i>good/good/good</i>	noises	<i>good</i>
oil condition	<i>good</i>	blow by	<i>moderate</i>
exhaust	<i>good</i>	belts	<i>good</i>
smoke	<i>(1)</i>	cooling system	<i>good</i>
<b>visual inspection exterior</b>		covers	<i>good</i>
chassis	<i>hooks welded on x-frame</i>	side doors	<i>lock missing on pump door</i>
engine hood	<i>good</i>	compartments	<i>RHS lid is hard to close</i>
steps, hand rails	<i>good</i>	bumpers / catwalk	<i>good</i>
boom	<i>good</i>	lights	<i>good</i>
stick	<i>good</i>	paintwork	<i>repainted recently</i>
<b>hydraulics</b>		boom cylinders	<i>RHS is leaking</i>
hoses,lines,swivel	<i>good</i>	stick cylinder	<i>good</i>
pump and valve bloc	<i>good</i>	bucket cylinder	<i>seal leaks</i>
<b>functional test</b>		boom drift	<i>no</i>
pins boom	<i>some play</i>	pump noises	<i>good</i>
pins stick	<i>moderate play</i>	slew ring play	<i>good</i>
pins bucket	<i>moderate play</i>	electrics	<i>good</i>
swing drive/brake	<i>good/good</i>	drive train	<i>good</i>
<b>tools</b>		bucket 2	
bucket 1	<i>1.45m</i>	condition	
condition	<i>80% remaining life</i>	coupler condition	
<b>U/C</b>	<b>remaining life %</b>	track nitch	
bushings	<i>100%</i>	track pins	<i>100%</i>
shoes	<i>100%</i>	sprockets	<i>100%</i>
idlers	<i>20-25%</i>	rollers	<i>20-30%</i>
carrier rollers	<i>30-40%</i>	shoe width in mm:	<i>600mm</i>
<b>problems, details</b>			
<i>(1) Deep grey smoke on start up but disappeared after a couple of seconds. Clean after warm up.</i>			
<i>The counterweight is not sitting straight.</i>			
<i>Some parts of the undercarriage have been replaced recently.</i>			
<i>Machine is equipped with a straight demolition boom.</i>			
<i>The SMU is not working. The ECM's have been reset recently (flashed)</i>			
<i>The general machine condition is good. Repaint has been done over all components including hydraulic hoses and alternator.</i>			
dimensions for transport L x W x H in meter:	<i>11m x 3.2m x 3.3m</i>		



The original report comes with approximately 40-50 pictures			
Videos can be done on demand			
Get in touch with Mevas for an inspection quotation			
<a href="http://www.mevas.eu">www.mevas.eu</a>			
More details about heavy machinery inspections you can find at			
We are your partner in Europe for inspections of used heavy equipment such as excavators, motor-graders, cranes, bulldozers, concrete pumps and rock drills.			