

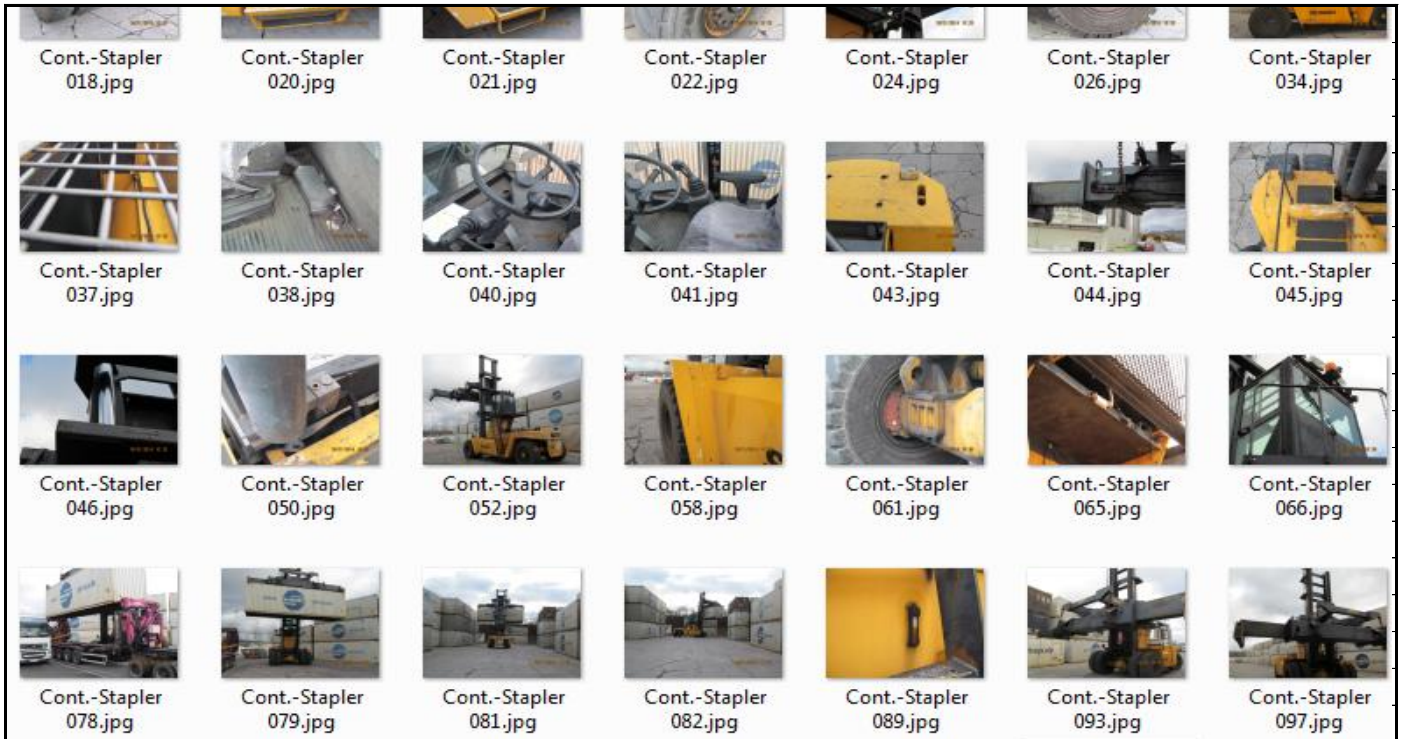


Evaluation Fork-Lift		www.mevas.eu		
Customer:	<i>Machinery FZC</i>	vers 10/12		
Date:	<i>10.01.2014</i>			
Machine / type:	<i>Steinbock G363CH-5B1</i>	location:	<i>Bayreuth</i>	
Serial No.:	<i>026649</i>	Hour reading:	<i>8579</i>	
Inspector:	<i>L.S.</i>	Year:	<i>1996</i>	
CE plate <input checked="" type="checkbox"/>	Duplex mast <input type="checkbox"/>	Triplex mast <input type="checkbox"/>	sideshift <input checked="" type="checkbox"/>	
enclosed cab <input checked="" type="checkbox"/>	forks adjustable hyd. <input type="checkbox"/>		Parts book <input type="checkbox"/> Op-Manual <input type="checkbox"/>	
cab		cab doors	<i>good</i>	
seat	<i>good</i>	windows	<i>good</i>	
switches	<i>good</i>	wipers	<i>good</i>	
gauges	<i>good</i>	floor mat	<i>good</i>	
heater	<i>good</i>	structure	<i>good</i>	
engine				
leaks	<i>good</i>	blow by	<i>good</i>	
oil condition	<i>good</i>	belts	<i>good</i>	
exhaust	<i>good</i>	fluid levels	<i>good</i>	
smoke	<i>good</i>	counterweight	<i>good</i>	
exterior-visual		tanks	<i>good</i>	
chassis	<i>good</i>	lights	<i>good</i>	
engine hood	<i>good</i>	paintwork	<i>fair quality</i>	
steps, grab irons	<i>good</i>	rims	<i>good</i>	
power train		driving operation	<i>good</i>	
axles	<i>good</i>	brakes	<i>good</i>	
transm./axle noise	<i>good</i>	steering cylinders	<i>good</i>	
hydraulics		pumps	<i>good</i>	
hoses & lines	<i>good</i>	steering orbital	<i>good</i>	
lift & tilt cylinders	<i>good</i>	side shift	<i>good</i>	
boom/forks operation		mast tilt	<i>good</i>	
fork lift operation	<i>excellent</i>	mast roller cond.	<i>good</i>	
Boom/fork condition		mast slides cond.	<i>good</i>	
lift chain condition	<i>good</i>	fork side slides	<i>good</i>	
forks straight?	<i>good</i>			
tires	mm or % good	<i>18.00R25 XZM</i>	cuts	solid
front right	<i>good, 95 %</i>	<i>Michelin</i>	<input type="checkbox"/>	<input checked="" type="checkbox"/>
front left	<i>good, 95 %</i>	<i>Michelin</i>	<input type="checkbox"/>	<input checked="" type="checkbox"/>
rear right	<i>good, 95 %</i>	<i>Michelin</i>	<input type="checkbox"/>	<input checked="" type="checkbox"/>
rear left	<i>good, 95 %</i>	<i>Michelin</i>	<input type="checkbox"/>	<input checked="" type="checkbox"/>
problems, details:	<p><i>Some rubber parts in cab are worn (boots on joysticks etc.)</i></p> <p><i>Slight wear traces on park brake shim. No action required.</i></p> <p><i>Tires have been renewed in 2013. Several wear parts such as chains and hydraulic hoses have been replaced in 2014. There was also a safety check performed recently.</i></p> <p><i>Lifting operation was done for 10 minutes. No action required.</i></p>			
	<i>The machine is in well maintained condition. We did not detect any major problem.</i>			
transport dimensions L x W x H in meter:	<i>depends on disassembly status</i>			
				

Sample Report

Sample Report



The original report comes with approximately 40-50 pictures			
Videos can be done on demand			
Get in touch with Mevas for an inspection quotation			
More details about heavy machinery inspections you can find at			
www.mevas.eu			
We are your partner in Europe for inspections of used heavy equipment such as excavators, motor-graders, cranes, bulldozers, concrete pumps and rock drills.			