


Inspection Crawler Crane		www.mevas.eu	
Customer:	DEL BONO & CO s.a	vers 11/12	
Date:	18 February 2014		
Machine / type:	Liebherr HS875HD	Hour reading:	7253
Serial No.:	185183	Year:	2008
Inspector:	Gyimesi	boom length:	30
CE <input checked="" type="checkbox"/>	air con <input checked="" type="checkbox"/>	boom check valve <input type="checkbox"/>	
auto lube <input checked="" type="checkbox"/>	jib <input type="checkbox"/>	secondary winch <input checked="" type="checkbox"/>	
cab		cab door	Good (& sliding is OK)
seat	Fair -burnhole on	windows	Good
switches	Good	wipers	Good
gauges	Good	covers/insulation	Good
heater	Good	floor mat	Good
air conditioner	Good	cab structure	Good
engine	(1)	manufacturer	Liebherr D9508
leaks	Good - none seen	serial no.	2007 14 0517
oil condition	Good	blow by	Good
coolant condition	Good	belts	Good
exhaust	Good	alternator	Good
coolers	Poor (1)	smoke	Good
visual inspection exterior		boom	Good
chassis	Good	jib	Good
engine doors	Good	pully	Good
steps, catwalks	Good	ropes	Good
sheet metal	Good	hooks	N/A (dragline)
compartments	Good	winches	Good
bumper & grab irons	Good	hydraulic hoses/lines	Good
lights	Good	final drives	Good
paintwork	Good	swivel joint	Poor - oil on, see pictures
functional test		swing drive	Good
winches operating	Good	swing brake	Good
winch brakes	Good	slewing ring play	Good
boom pin play	Good	hoist cylinder	N/A
counterweight cyl.	N/A	emergency shut-down	Good
drive train operates	Good	steering operates	Good
brakes	Good	electrics/electronics	Good
Undercarriage	remaining life %		remaining life %
bushings	80%	track links	90%
shoes	80%	sprockets	70%
idlers	70%	rollers	70%
carrier rollers	-	shoe width in mm:	1000
configuration details:			
additional counterweight, 30 m boom, secondary winch, standard dragline equipment			
3,8m ³ dragline standard bucket			

Sample Report

Problems, repair recommendation:

(1) The dataplate is removed from the engine, but available. One cooler has oil residue, but it seems, it comes from the fan motor.
Drag rope limiters (for the motor) seem to be OK. The main engine seems to be a bit worn, but no broken elements, only valves etc. are OK. Condition of the track is OK. See pictures.

Sample Report

The hydraulic pumps have noticeable wet oil residue on, see pictures.

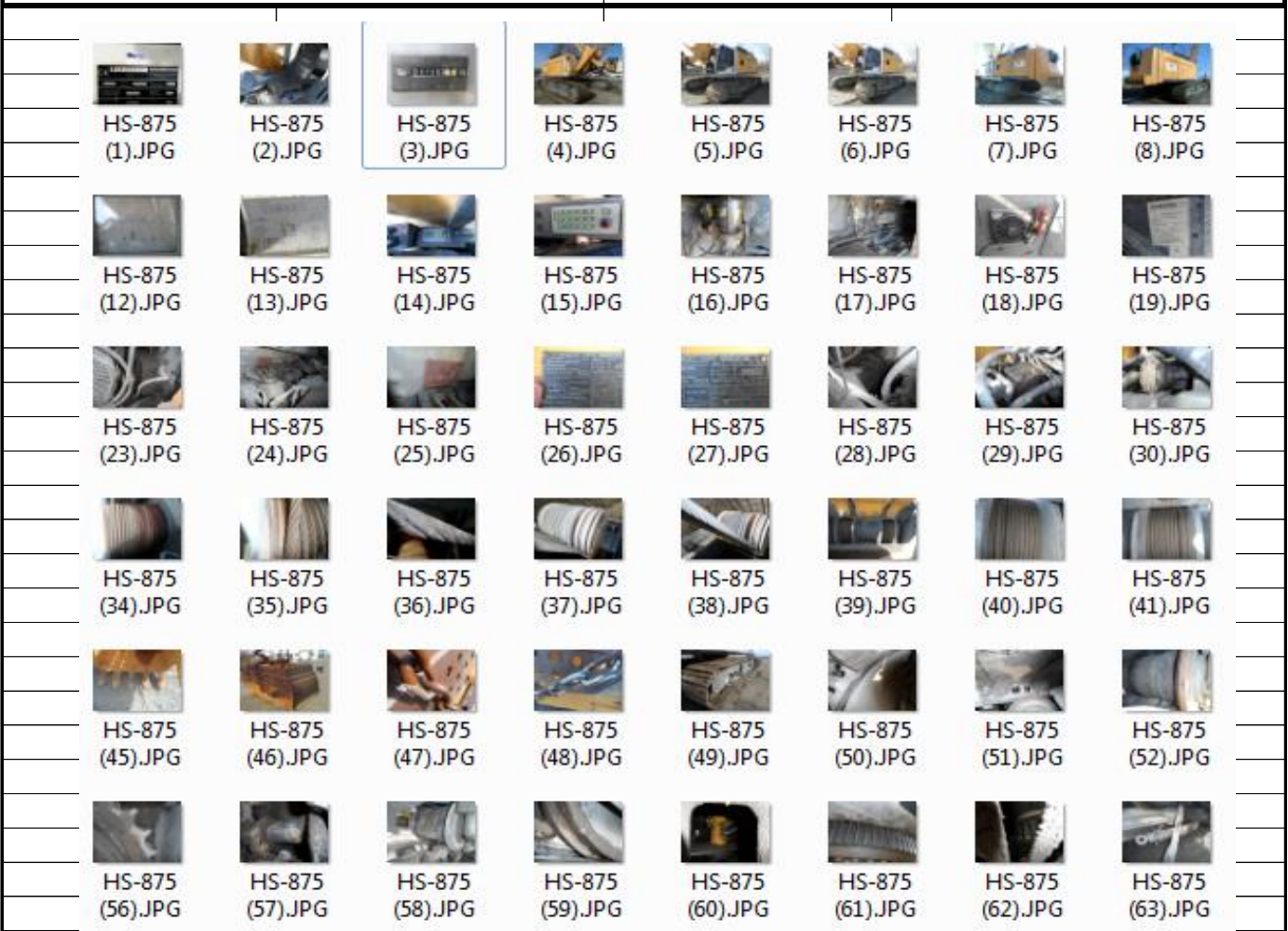
Limited performance test: the machine is at the office, limited place to move, not loaded the bucket

Transportation width: adjustable U/C, but c.a. 4000mm in retracted position. Owner's comment: The crane was transported to the mine (as new) without the track coffins.

So, dimensions are (with track /retracted/, without boom): 9 x 4 x 3,3 m

transport dimension L x W x H in meter:

See above



The original report comes with approximately 50-60 pictures and more details

Videos can be done on demand

Get in touch with Mevas for an inspection quotation

More details about heavy machinery inspections you can find at

www.mevas.eu

We are your partner in Europe for inspections of used heavy equipment such as excavators, motor-graders, cranes, bulldozers, concrete pumps and rock drills.