

Machine operator, take care for equipment!

Basic checks before shift starts

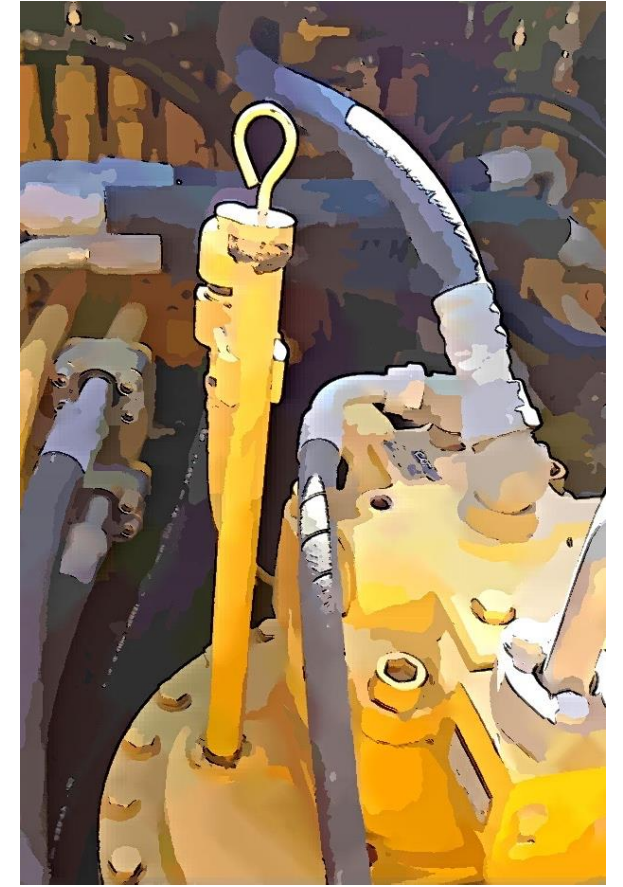
- air filters
- engine oil level
- transmission oil level
- hydraulic oil level
- swing drive oil level
- coolant level

Check before operation

- brake pressure
- no people in work space
- try the horn
- perform brake test

End of work shift

- fuel level check
- greasing accordingly
- disconnect isolator switch
- report problems to management



The machine you are operating is your workplace. Keep it in working order and keep it clean.



Designed by www.mevas.eu
Used Equipment Inspectors
+49 35206 39150