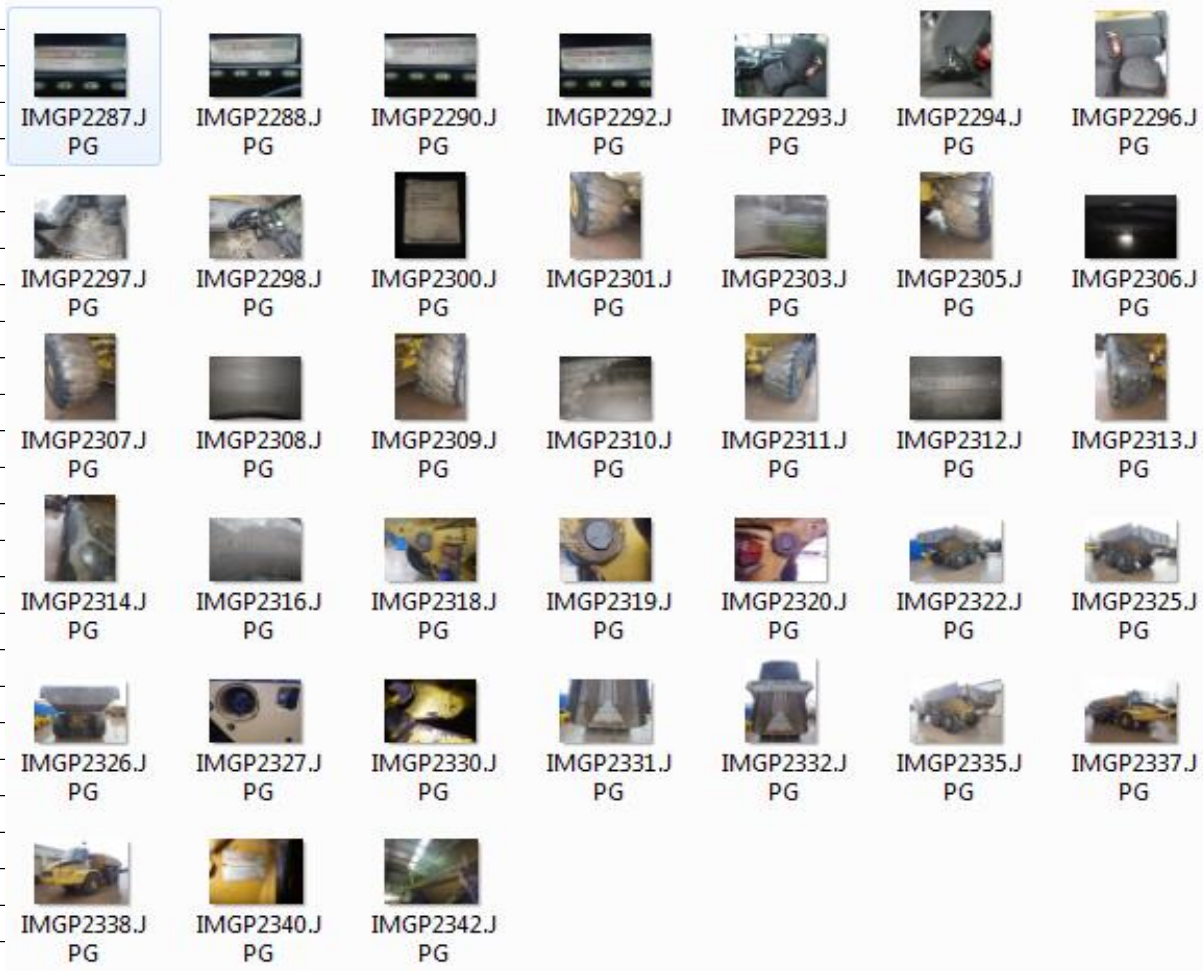


Evaluation Articulated Dump Truck		<a href="http://www.mevas.eu">www.mevas.eu</a>	
Customer/location:	<i>Chepstow International</i>	vers 10/12	
Inspector:	<i>Mevas Inspector 2</i>		
Machine / type:	<i>Cat 730</i>	Hour reading:	<i>7068</i>
Serial No. :	<i>B1M00302</i>	Year:	
CE <input checked="" type="checkbox"/>	air conditioner <input type="checkbox"/>	auto lube <input checked="" type="checkbox"/>	retarder <input checked="" type="checkbox"/>
tailgate <input checked="" type="checkbox"/>	exhaust heat <input checked="" type="checkbox"/>	sup.steer <input checked="" type="checkbox"/>	Manual <input checked="" type="checkbox"/> Parts book <input type="checkbox"/>
<b>cab</b>	<i>good</i>	cab door	<i>good</i>
seat	<i>good but L/H Arm rest missing</i>	windows	<i>good</i>
switches	<i>good except Heater control</i>	wipers	<i>good</i>
gauges	<i>good</i>	floor mats	<i>good</i>
aircon / heat	<i>See comments</i>	structure	<i>good</i>
<b>engine</b>	<i>See comments</i>	Serial No.	
leaks	<i>None visible from below</i>	noises	<i>Started and Ran well</i>
oil condition	<i>?</i>	oil	<i>Oil level is externally</i>
exhaust	<i>good</i>	fluid levels	<i>Coolant ok</i>
smoke	<i>good</i>	power	<i>good</i>
cooling system	<i>good</i>	cooler grills	<i>good</i>
<b>exterior</b>		bumpers/fenders	<i>good</i>
chassis	<i>good</i>	lights	<i>good</i>
engine hood	<i>would not lift</i>	paintwork	<i>good, some rust spots</i>
stairs, hand rails	<i>good</i>	rims	<i>good</i>
<b>power train</b>		universal joints	<i>good 1)</i>
axles	<i>good</i>	brake disk	<i>good</i>
transmission	<i>good</i>	steering cylinders	<i>good, very slight play</i>
<b>hydraulics</b>	<i>good</i>	pumps	<i>good</i>
hoses & lines	<i>good</i>	steering orbital	<i>good</i>
lift cylinders	<i>Minor play Top and Bottom pins</i>	steering	<i>good,</i>
<b>functional test</b>		articulation play	<i>good</i>
stall test	<i>2)</i>	body lift	<i>good</i>
transmission fwd.	<i>good</i>	electrics	<i>good</i>
transmission rev.	<i>good</i>	park brake	<i>good</i>
service break	<i>good</i>	pins	<i>New Pins but Bosses Skip Worn 3)</i>
<b>truck body</b>		tail gate	<i>good</i>
welds	<i>good</i>	side wall condition	<i>good.Small Dents on L/H Side</i>
bed condition	<i>Good</i>	tires	mm or % good
<b>tires</b>		23.5 X 25	cuts recapped Ser. No.
front right	<i>18 mm 10%</i>	<i>Bridgestone</i>	<input type="checkbox"/> <input type="checkbox"/> <i>F5R381034</i>
front left	<i>18mm 10%</i>	<i>Bridgestone</i>	<input type="checkbox"/> <input type="checkbox"/> <i>F5R381751</i>
center right	<i>9mm 5%</i>	<i>Bridgestone</i>	<input type="checkbox"/> <input type="checkbox"/> <i>F5R3812908</i>
center left	<i>13mm 7%</i>	<i>Michelin</i>	<input type="checkbox"/> <input type="checkbox"/> <i>VVC0470V1A</i>
rear right	<i>4mm Poor</i>	<i>Bridgestone</i>	<input type="checkbox"/> <input type="checkbox"/> <i>F6K282265</i>
rear left	<i>10mm 20% (new)</i>	<i>Michelin</i>	<input type="checkbox"/> <input type="checkbox"/> <i>VVC0462V9A</i>
problems, details	<i>On the 2330 we have a problem with the heater control. But the heater control is not adjustable. Engine hood did not lift, motor works but it sticks. (clack clack)</i>		
	<i>No engine leaks seen from below; 1) slight play in Splines on front Diff input shaft</i>		
	<i>2) Drive test was performed and all gears change well. Brakes react good.</i>		
	<i>Picture 2330 shows a broken hose on the center axle but we believe it is just a breather for axle.</i>		
	<i>A bit play noted in steering and lift cylinders but it is appropriate to hour level and not a problem so far.</i>		
	<i>3) The wear in the Pin Bosses on the Body mounting Pins will soon require Line Bore and Bushing</i>		
	<i>There are logged service codes: E267 (2) Engine shut down switch erratic/incorrect</i>		
dimensions for transport L x W x H in meter:	<i>10mtrX2.8mtrX3.75</i>		



The original report comes with approximately 40-50 pictures

Videos can be done on demand

Get in touch with Mevas for an inspection quotation

More details about heavy machinery inspections you can find at

[www.mevas.eu](http://www.mevas.eu)

We are your partner in Europe for inspections of used heavy equipment such as excavators, motor-graders, cranes, bulldozers, concrete pumps and rock drills.