

## Picture requirements for MEVAS inspections

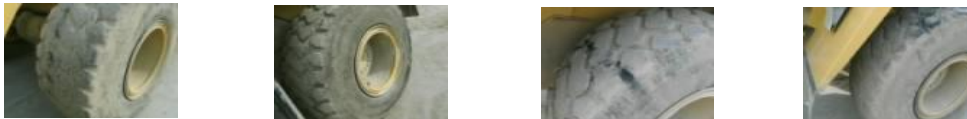
Preferred photo solution is 1200 x 960 pixels. *Date* please switched ON

### 4 pictures over each corner of machine in 45°

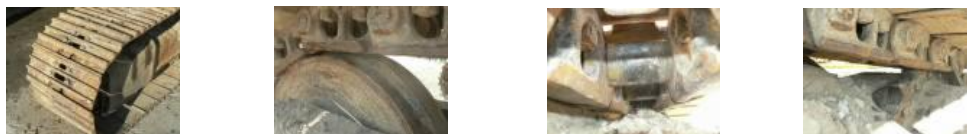
Please make pictures - filled with the machine of interest. Avoid landscape photography and other machines in picture if possible. Try to fill your camera screen with the iron of interest. **Doors closed please!**



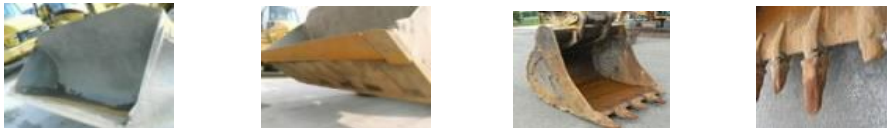
Tires: Please show condition and problems. Make one picture of each tire or more if bad condition



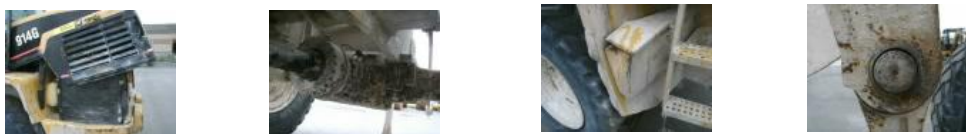
Undercarriage: Make 6-8 detailed pictures to show condition, more pictures if problems



Buckets: 1 picture inside, one outside, additional if problems



Details: Make pictures of costly problems, leaks or broken parts. Please no pictures of small problems like mirrors or broken rear light.



Engine and compartments: 1-2 engine pictures, 1 picture each compartment



Finish: 1-2 pictures cab interior, 1 picture hour meter, 1 picture serial No plate (use macro function if needed)



Double check pictures before leaving a site. It would be a pity you need to go back 300km for 3 missing pictures. If you follow this guide you should end up with 20-30 pictures per unit.